



ST LOUIS METRO ARES/RACES ORIENTATION SEMINAR



*WHETHER YOU'RE A NEW VOLUNTEER TO ST LOUIS METRO
ARES OR A LONG-TIME PARTICIPANT, YOU'LL WANT TO ATTEND THIS SEMINAR!*

This 6-hour orientation seminar will cover our updated local St. Louis Metro ARES/RACES Basic Emergency Operations and Digital Operations Plan, the District C plan, and the Missouri Section plan. Also discussed will be our interaction with our served agencies and MOUs both signed and in progress.

When:

September 23rd, 2017

Time(s):

9:00am – 4:00pm

Lunch break from 12:00pm – 1:00pm

Where:

Saint Louis County Office of Emergency
Management
1150 Hanna Road
Ballwin, Missouri 63021

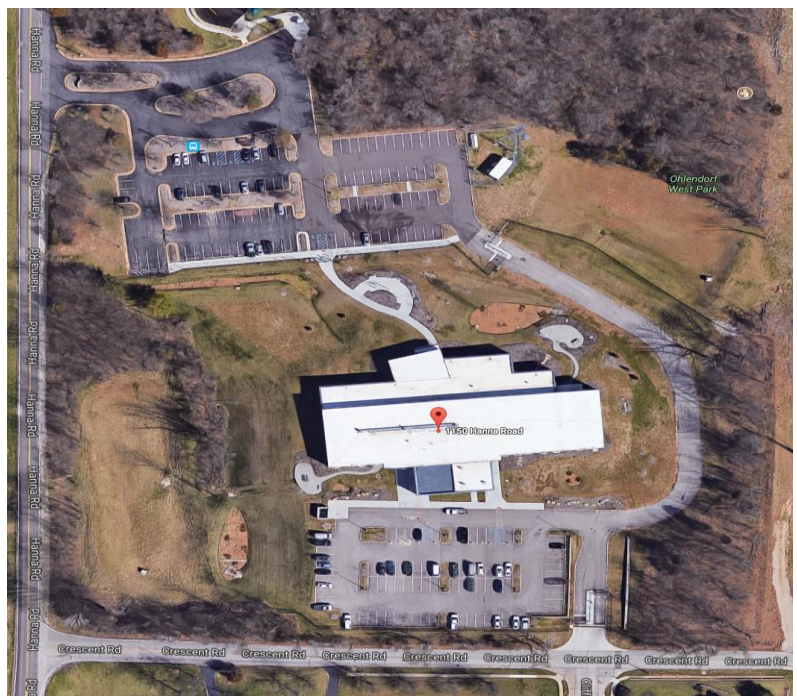
Park in the north lot outside the main entrance
next to Ohlendorf Park.

Prerequisites:

A desire to know where you “the ARES volunteer”
fit into the “big picture” should our services be
requested.

Class Topics:

- An overview of each of the operations plans
- Which frequencies will be used and the associated communications plans for a local, district, and statewide response.
- What radio equipment you can expect to need for a deployment.
- How you fit into the “big picture” and how you can fill much needed work within our organization.



Sponsored by:

St. Louis Metro ARES®/RACES

<http://www.stlares.org>

Register by contacting:

Peter B. Brisbine, NØMTH

Email: n0mth.pb@gmail.com